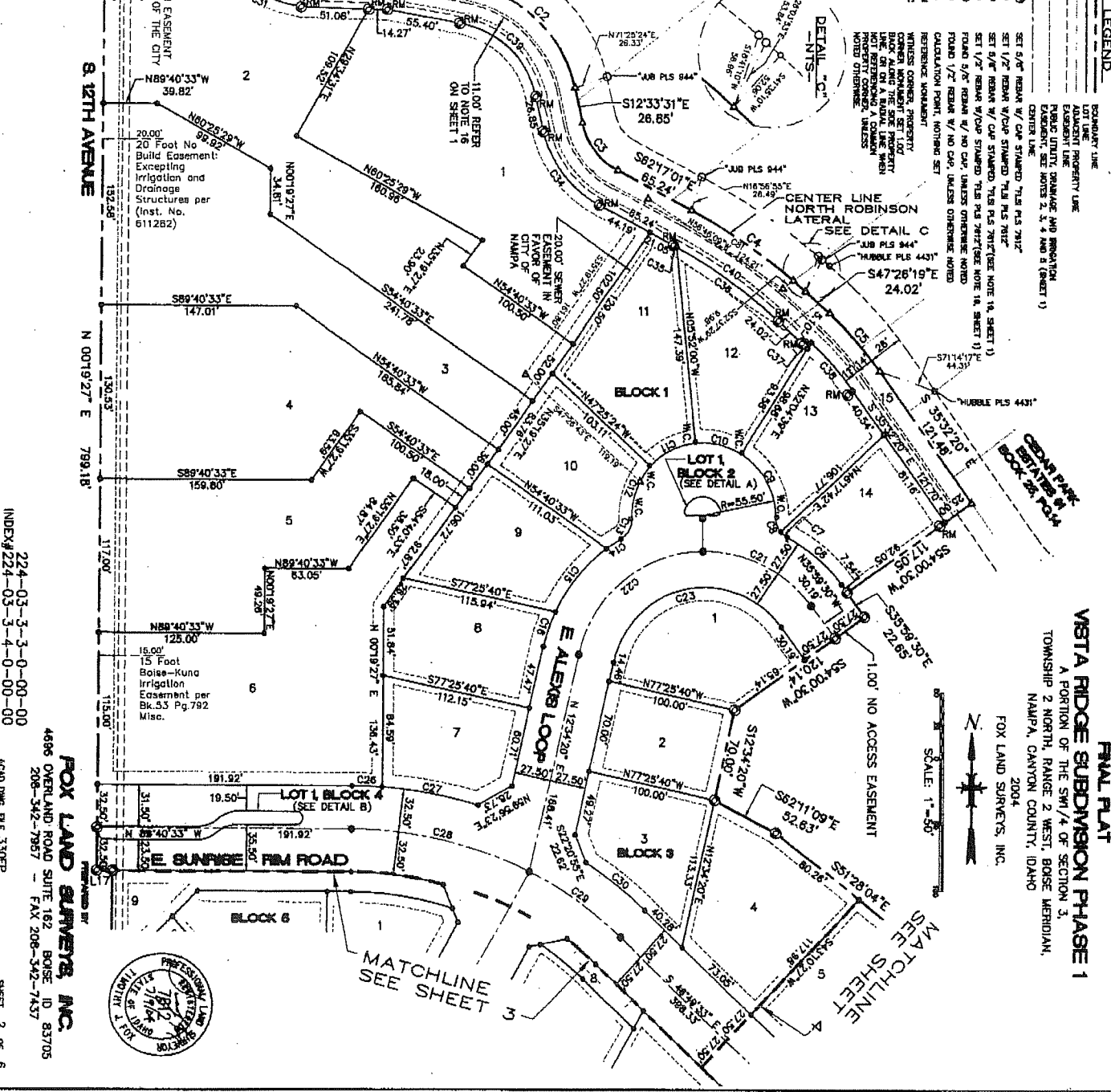
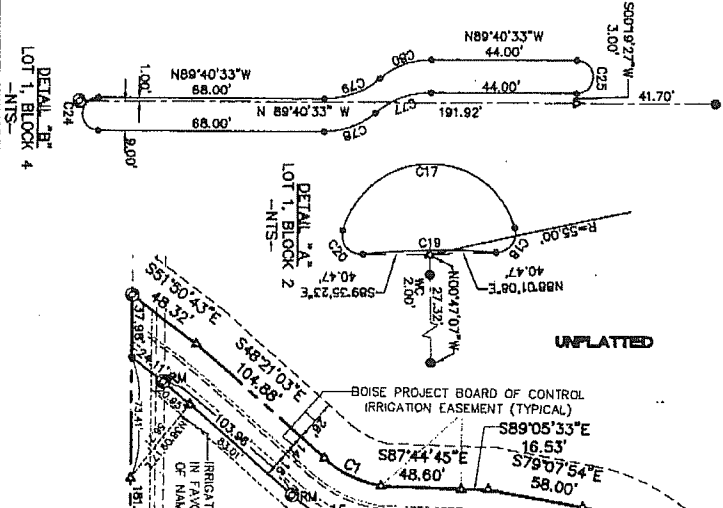


CURVE	BEARINGS	DELTA	LENGTH	TANGENT	CHORD	BEARINGS	CHORD	LENGTH
C1	S00°19'27"W	1.00'	0.25'	41.70'		S82°28'20"E	3.00'	3.00'
C2	N89°40'33"W	68.00'	44.00'	191.92'		S82°28'20"E	3.00'	3.00'
C3	N89°40'33"W	68.00'	44.00'	191.92'		S82°28'20"E	3.00'	3.00'
C4	N89°40'33"W	68.00'	44.00'	191.92'		S82°28'20"E	3.00'	3.00'
C5	N89°40'33"W	68.00'	44.00'	191.92'		S82°28'20"E	3.00'	3.00'
C6	N89°40'33"W	68.00'	44.00'	191.92'		S82°28'20"E	3.00'	3.00'
C7	N89°40'33"W	68.00'	44.00'	191.92'		S82°28'20"E	3.00'	3.00'
C8	N89°40'33"W	68.00'	44.00'	191.92'		S82°28'20"E	3.00'	3.00'
C9	N89°40'33"W	68.00'	44.00'	191.92'		S82°28'20"E	3.00'	3.00'
C10	N89°40'33"W	68.00'	44.00'	191.92'		S82°28'20"E	3.00'	3.00'
C11	N89°40'33"W	68.00'	44.00'	191.92'		S82°28'20"E	3.00'	3.00'
C12	N89°40'33"W	68.00'	44.00'	191.92'		S82°28'20"E	3.00'	3.00'
C13	N89°40'33"W	68.00'	44.00'	191.92'		S82°28'20"E	3.00'	3.00'
C14	N89°40'33"W	68.00'	44.00'	191.92'		S82°28'20"E	3.00'	3.00'
C15	N89°40'33"W	68.00'	44.00'	191.92'		S82°28'20"E	3.00'	3.00'
C16	N89°40'33"W	68.00'	44.00'	191.92'		S82°28'20"E	3.00'	3.00'
C17	N89°40'33"W	68.00'	44.00'	191.92'		S82°28'20"E	3.00'	3.00'
C18	N89°40'33"W	68.00'	44.00'	191.92'		S82°28'20"E	3.00'	3.00'
C19	N89°40'33"W	68.00'	44.00'	191.92'		S82°28'20"E	3.00'	3.00'
C20	N89°40'33"W	68.00'	44.00'	191.92'		S82°28'20"E	3.00'	3.00'
C21	N89°40'33"W	68.00'	44.00'	191.92'		S82°28'20"E	3.00'	3.00'
C22	N89°40'33"W	68.00'	44.00'	191.92'		S82°28'20"E	3.00'	3.00'
C23	N89°40'33"W	68.00'	44.00'	191.92'		S82°28'20"E	3.00'	3.00'
C24	N89°40'33"W	68.00'	44.00'	191.92'		S82°28'20"E	3.00'	3.00'
C25	N89°40'33"W	68.00'	44.00'	191.92'		S82°28'20"E	3.00'	3.00'
C26	N89°40'33"W	68.00'	44.00'	191.92'		S82°28'20"E	3.00'	3.00'
C27	N89°40'33"W	68.00'	44.00'	191.92'		S82°28'20"E	3.00'	3.00'
C28	N89°40'33"W	68.00'	44.00'	191.92'		S82°28'20"E	3.00'	3.00'
C29	N89°40'33"W	68.00'	44.00'	191.92'		S82°28'20"E	3.00'	3.00'
C30	N89°40'33"W	68.00'	44.00'	191.92'		S82°28'20"E	3.00'	3.00'
C31	N89°40'33"W	68.00'	44.00'	191.92'		S82°28'20"E	3.00'	3.00'
C32	N89°40'33"W	68.00'	44.00'	191.92'		S82°28'20"E	3.00'	3.00'
C33	N89°40'33"W	68.00'	44.00'	191.92'		S82°28'20"E	3.00'	3.00'
C34	N89°40'33"W	68.00'	44.00'	191.92'		S82°28'20"E	3.00'	3.00'
C35	N89°40'33"W	68.00'	44.00'	191.92'		S82°28'20"E	3.00'	3.00'
C36	N89°40'33"W	68.00'	44.00'	191.92'		S82°28'20"E	3.00'	3.00'
C37	N89°40'33"W	68.00'	44.00'	191.92'		S82°28'20"E	3.00'	3.00'
C38	N89°40'33"W	68.00'	44.00'	191.92'		S82°28'20"E	3.00'	3.00'
C39	N89°40'33"W	68.00'	44.00'	191.92'		S82°28'20"E	3.00'	3.00'
C40	N89°40'33"W	68.00'	44.00'	191.92'		S82°28'20"E	3.00'	3.00'
C41	N89°40'33"W	68.00'	44.00'	191.92'		S82°28'20"E	3.00'	3.00'
C42	N89°40'33"W	68.00'	44.00'	191.92'		S82°28'20"E	3.00'	3.00'
C43	N89°40'33"W	68.00'	44.00'	191.92'		S82°28'20"E	3.00'	3.00'
C44	N89°40'33"W	68.00'	44.00'	191.92'		S82°28'20"E	3.00'	3.00'
C45	N89°40'33"W	68.00'	44.00'	191.92'		S82°28'20"E	3.00'	3.00'
C46	N89°40'33"W	68.00'	44.00'	191.92'		S82°28'20"E	3.00'	3.00'
C47	N89°40'33"W	68.00'	44.00'	191.92'		S82°28'20"E	3.00'	3.00'
C48	N89°40'33"W	68.00'	44.00'	191.92'		S82°28'20"E	3.00'	3.00'
C49	N89°40'33"W	68.00'	44.00'	191.92'		S82°28'20"E	3.00'	3.00'
C50	N89°40'33"W	68.00'	44.00'	191.92'		S82°28'20"E	3.00'	3.00'
C51	N89°40'33"W	68.00'	44.00'	191.92'		S82°28'20"E	3.00'	3.00'
C52	N89°40'33"W	68.00'	44.00'	191.92'		S82°28'20"E	3.00'	3.00'
C53	N89°40'33"W	68.00'	44.00'	191.92'		S82°28'20"E	3.00'	3.00'
C54	N89°40'33"W	68.00'	44.00'	191.92'		S82°28'20"E	3.00'	3.00'
C55	N89°40'33"W	68.00'	44.00'	191.92'		S82°28'20"E	3.00'	3.00'
C56	N89°40'33"W	68.00'	44.00'	191.92'		S82°28'20"E	3.00'	3.00'
C57	N89°40'33"W	68.00'	44.00'	191.92'		S82°28'20"E	3.00'	3.00'
C58	N89°40'33"W	68.00'	44.00'	191.92'		S82°28'20"E	3.00'	3.00'
C59	N89°40'33"W	68.00'	44.00'	191.92'		S82°28'20"E	3.00'	3.00'
C60	N89°40'33"W	68.00'	44.00'	191.92'		S82°28'20"E	3.00'	3.00'
C61	N89°40'33"W	68.00'	44.00'	191.92'		S82°28'20"E	3.00'	3.00'
C62	N89°40'33"W	68.00'	44.00'	191.92'		S82°28'20"E	3.00'	3.00'
C63	N89°40'33"W	68.00'	44.00'	191.92'		S82°28'20"E	3.00'	3.00'
C64	N89°40'33"W	68.00'	44.00'	191.92'		S82°28'20"E	3.00'	3.00'
C65	N89°40'33"W	68.00'	44.00'	191.92'		S82°28'20"E	3.00'	3.00'
C66	N89°40'33"W	68.00'	44.00'	191.92'		S82°28'20"E	3.00'	3.00'
C67	N89°40'33"W	68.00'	44.00'	191.92'		S82°28'20"E	3.00'	3.00'
C68	N89°40'33"W	68.00'	44.00'	191.92'		S82°28'20"E	3.00'	3.00'
C69	N89°40'33"W	68.00'	44.00'	191.92'		S82°28'20"E	3.00'	3.00'
C70	N89°40'33"W	68.00'	44.00'	191.92'		S82°28'20"E	3.00'	3.00'
C71	N89°40'33"W	68.00'	44.00'	191.92'		S82°28'20"E	3.00'	3.00'
C72	N89°40'33"W	68.00'	44.00'	191.92'		S82°28'20"E	3.00'	3.00'
C73	N89°40'33"W	68.00'	44.00'	191.92'		S82°28'20"E	3.00'	3.00'
C74	N89°40'33"W	68.00'	44.00'	191.92'		S82°28'20"E	3.00'	3.00'
C75	N89°40'33"W	68.00'	44.00'	191.92'		S82°28'20"E	3.00'	3.00'
C76	N89°40'33"W	68.00'	44.00'	191.92'		S82°28'20"E	3.00'	3.00'
C77	N89°40'33"W	68.00'	44.00'	191.92'		S82°28'20"E	3.00'	3.00'
C78	N89°40'33"W	68.00'	44.00'	191.92'		S82°28'20"E	3.00'	3.00'
C79	N89°40'33"W	68.00'	44.00'	191.92'		S82°28'20"E	3.00'	3.00'
C80	N89°40'33"W	68.00'	44.00'	191.92'		S82°28'20"E	3.00'	3.00'
C81	N89°40'33"W	68.00'	44.00'	191.92'		S82°28'20"E	3.00'	3.00'
C82	N89°40'33"W	68.00'	44.00'	191.92'		S82°28'20"E	3.00'	3.00'
C83	N89°40'33"W	68.00'	44.00'	191.92'		S82°28'20"E	3.00'	3.00'
C84	N89°40'33"W	68.00'	44.00'	191.92'		S82°28'20"E	3.00'	3.00'
C85	N89°40'33"W	68.00'	44.00'	191.92'		S82°28'20"E	3.00'	3.00'
C86	N89°40'33"W	68.00'	44.00'	191.92'		S82°28'20"E	3.00'	3.00'
C87	N89°40'33"W	68.00'	44.00'	191.92'		S82°28'20"E	3.00'	3.00'
C88	N89°40'33"W	68.00'	44.00'	191.92'		S82°28'20"E	3.00'	3.00'
C89	N89°40'33"W	68.00'	44.00'	191.92'		S82°28'20"E	3.00'	3.00'
C90	N89°40'33"W	68.00'	44.00'	191.92'		S82°28'20"E	3.00'	3.00'
C91	N89°40'33"W	68.00'	44.00'	191.92'		S82°28'20"E	3.00'	3.00'
C92	N89°40'33"W	68.00'	44.00'	191.92'		S82°28'20"E	3.00'	3.00'
C93	N89°40'33"W	68.00'	44.00'	191.92'		S82°28'20"E	3.00'	3.00'
C94	N89°40'33"W	68.00'	44.00'	191.92'		S82°28'20"E	3.00'	3.00'
C95	N89°40'33"W	68.00'	44.00'	191.92'		S82°28'20"E	3.00'	3.00'
C96	N89°40'33"W	68.00'	44.00'	191.92'		S82°28'20"E	3.00'	3.00'
C97	N89°40'33"W	68.00'	44.00'	191.92'		S82°28'20"E	3.00'	3.00'
C98	N89°40'33"W	68.00'	44.00'	191.92'		S82°28'20"E	3.00'	3.00'
C99	N89°40'33"W	68.00'	44.00'	191.92'		S82°28'20"E	3.00'	3.00'
C100	N89°40'33"W	68.00'	44.00'	191.92'		S82°28'20"E	3.00'	3.00'

LEGEND

- BOUNDARY LINE
- LOT LINE PROPERTY LINE
- PUBLIC UTILITY, DRAINAGE AND IRRIGATION EASEMENT, SEE NOTES 2, 3, 4 AND 8 (SHEET 1)
- CENTER LINE
- SET 5/8" REBAR W/ CAP STAMPED THIS PLS THIS SET
- SET 1/2" REBAR W/ CAP STAMPED THIS PLS THIS SET
- SET 3/4" REBAR W/ CAP STAMPED THIS PLS THIS SET (SEE NOTE 18, SHEET 1)
- SET 1/2" REBAR W/ CAP STAMPED THIS PLS THIS SET (SEE NOTE 18, SHEET 1)
- FOUND 5/8" REBAR W/ NO CAP, UNLESS OTHERWISE NOTED
- FOUND 1/2" REBAR W/ NO CAP, UNLESS OTHERWISE NOTED
- CALCULATION POINT, HOLDING SET
- REFERENCE WORKPOINT
- WIRELESS CORNER PROPERTY CORNER WORKPOINT SET 1.00' BACK ALONG THE SURE PROPERTY LINE FROM THE PROPERTY CORNER, UNLESS OTHERWISE NOTED



224-03-3-3-0-00-00
INDEX#224-03-3-4-0-00-00

FOX LAND SURVEYERS, INC.
4686 OVERLAND ROAD SUITE 162 BOISE ID 83705
208-342-7957 - FAX 208-342-7437



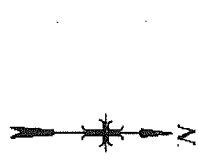
MATCHLINE
SEE SHEET 3

MATCHLINE
SEE SHEET 4



FINAL PLAT
WEST RIDGE SUBDIVISION PHASE 1
A PORTION OF THE SW 1/4 OF SECTION 3,
TOWNSHIP 2 NORTH, RANGE 2 WEST, BOISE MERIDIAN,
NAMPA, CANYON COUNTY, IDAHO
2004
FOX LAND SURVEYS, INC.

FINAL PLAN
VISTA RIDGE SUBDIVISION PHASE 1
 A PORTION OF THE SW 1/4 OF SECTION 3,
 TOWNSHIP 2 NORTH, RANGE 2 WEST, BOISE MERIDIAN,
 NAMPA, CANYON COUNTY, IDAHO
 2004
 FOX LAND SURVEYS, INC.



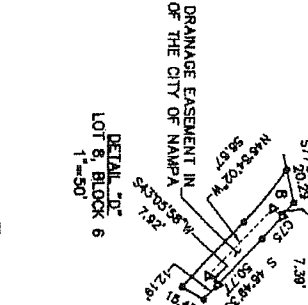
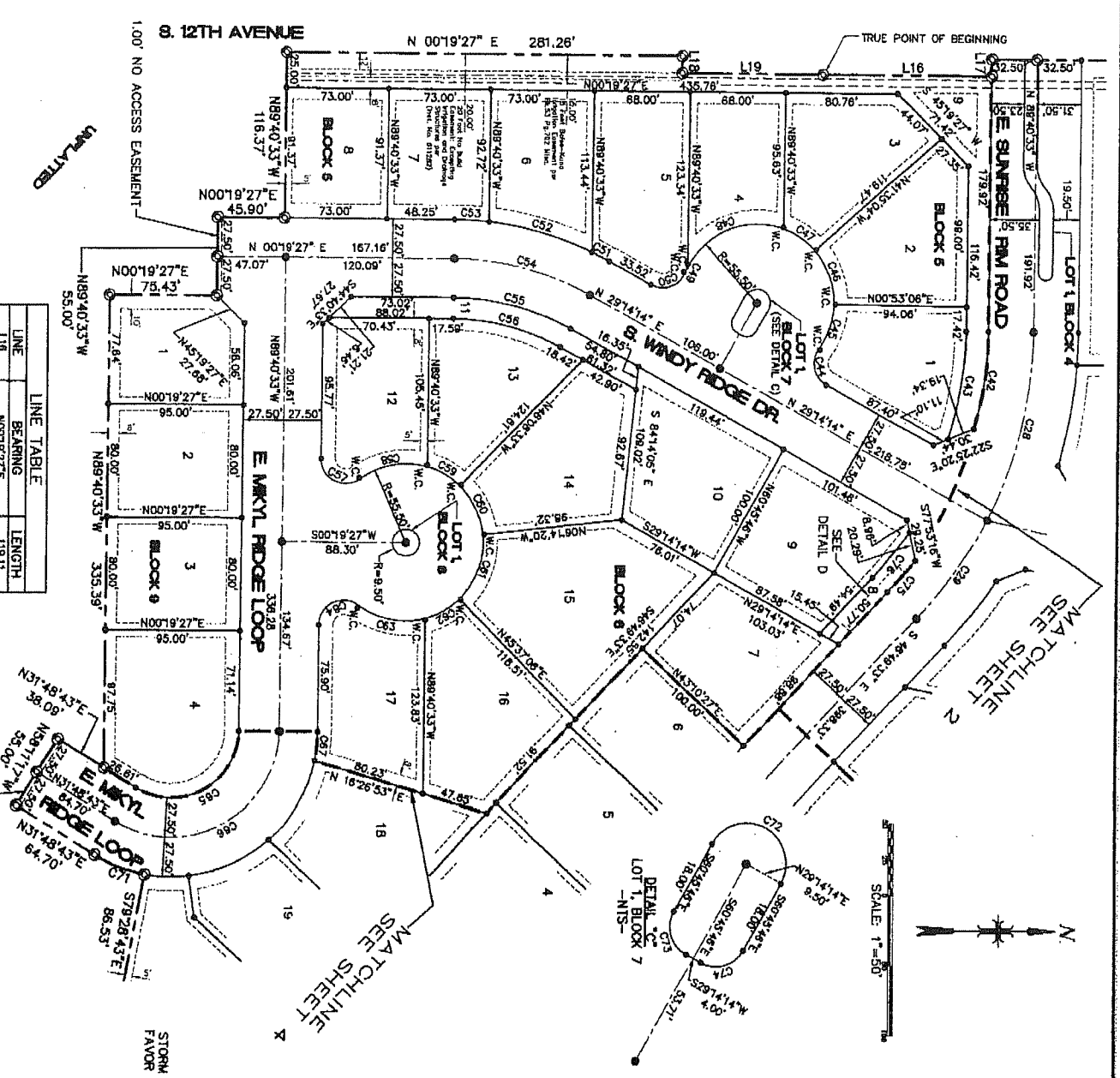
- LEGEND**
- BOUNDARY LINE
 - ADJACENT PROPERTY LINE
 - PUBLIC UTILITY
 - DRAINAGE AND IRRIGATION EASEMENT, SEE NOTES 2, 3, 4 AND 5 (SHEET 1)
 - CENTER LINE
 - SET 3/8" REAR W/ C/O STAMPED "T.S. PLS. 7/11"
 - SET 1/2" REAR W/ C/O STAMPED "T.S. PLS. 7/11"
 - SET 5/8" REAR W/ C/O STAMPED "T.S. PLS. 7/11" (SEE NOTE 14, SHEET 1)
 - SET 1/2" REAR W/ C/O STAMPED "T.S. PLS. 7/11" (SEE NOTE 14, SHEET 1)
 - FOUND 5/8" REAR W/ NO C/O, UNLESS OTHERWISE NOTED
 - FOUND 1/2" REAR W/ NO C/O, UNLESS OTHERWISE NOTED
 - CALCULATION POINT, NOTHING SET
 - REFERENCE MARK/POINT
 - WINES CORNER, PROPERTY
 - CORNER MONUMENT SET 1.0' W/ 1.0' C/O, THE MONUMENT IS NOT REFERENCED TO A CORNER, UNLESS OTHERWISE NOTED
 - MONUMENT, UNLESS OTHERWISE NOTED

CURVE TABLE

CURVE	RADIUS	DELTA	LENGTH	TANGENT	CHORD	BEARING	CHORD LENGTH
C52	287.20	105.24	58.40	102.77	76.39	N 89°40'33" W	76.19
C53	287.20	105.24	58.40	102.77	76.39	N 89°40'33" W	76.19
C54	177.00	187.01	78.33	187.57	147.87	N 89°40'33" W	147.87
C55	177.00	187.01	78.33	187.57	147.87	N 89°40'33" W	147.87
C56	177.00	187.01	78.33	187.57	147.87	N 89°40'33" W	147.87
C57	177.00	187.01	78.33	187.57	147.87	N 89°40'33" W	147.87
C58	177.00	187.01	78.33	187.57	147.87	N 89°40'33" W	147.87
C59	177.00	187.01	78.33	187.57	147.87	N 89°40'33" W	147.87
C60	177.00	187.01	78.33	187.57	147.87	N 89°40'33" W	147.87
C61	177.00	187.01	78.33	187.57	147.87	N 89°40'33" W	147.87
C62	177.00	187.01	78.33	187.57	147.87	N 89°40'33" W	147.87
C63	177.00	187.01	78.33	187.57	147.87	N 89°40'33" W	147.87
C64	177.00	187.01	78.33	187.57	147.87	N 89°40'33" W	147.87
C65	177.00	187.01	78.33	187.57	147.87	N 89°40'33" W	147.87
C66	177.00	187.01	78.33	187.57	147.87	N 89°40'33" W	147.87
C67	177.00	187.01	78.33	187.57	147.87	N 89°40'33" W	147.87
C68	177.00	187.01	78.33	187.57	147.87	N 89°40'33" W	147.87
C69	177.00	187.01	78.33	187.57	147.87	N 89°40'33" W	147.87
C70	177.00	187.01	78.33	187.57	147.87	N 89°40'33" W	147.87
C71	177.00	187.01	78.33	187.57	147.87	N 89°40'33" W	147.87
C72	177.00	187.01	78.33	187.57	147.87	N 89°40'33" W	147.87
C73	177.00	187.01	78.33	187.57	147.87	N 89°40'33" W	147.87
C74	177.00	187.01	78.33	187.57	147.87	N 89°40'33" W	147.87
C75	177.00	187.01	78.33	187.57	147.87	N 89°40'33" W	147.87
C76	177.00	187.01	78.33	187.57	147.87	N 89°40'33" W	147.87
C77	177.00	187.01	78.33	187.57	147.87	N 89°40'33" W	147.87
C78	177.00	187.01	78.33	187.57	147.87	N 89°40'33" W	147.87

LINE TABLE

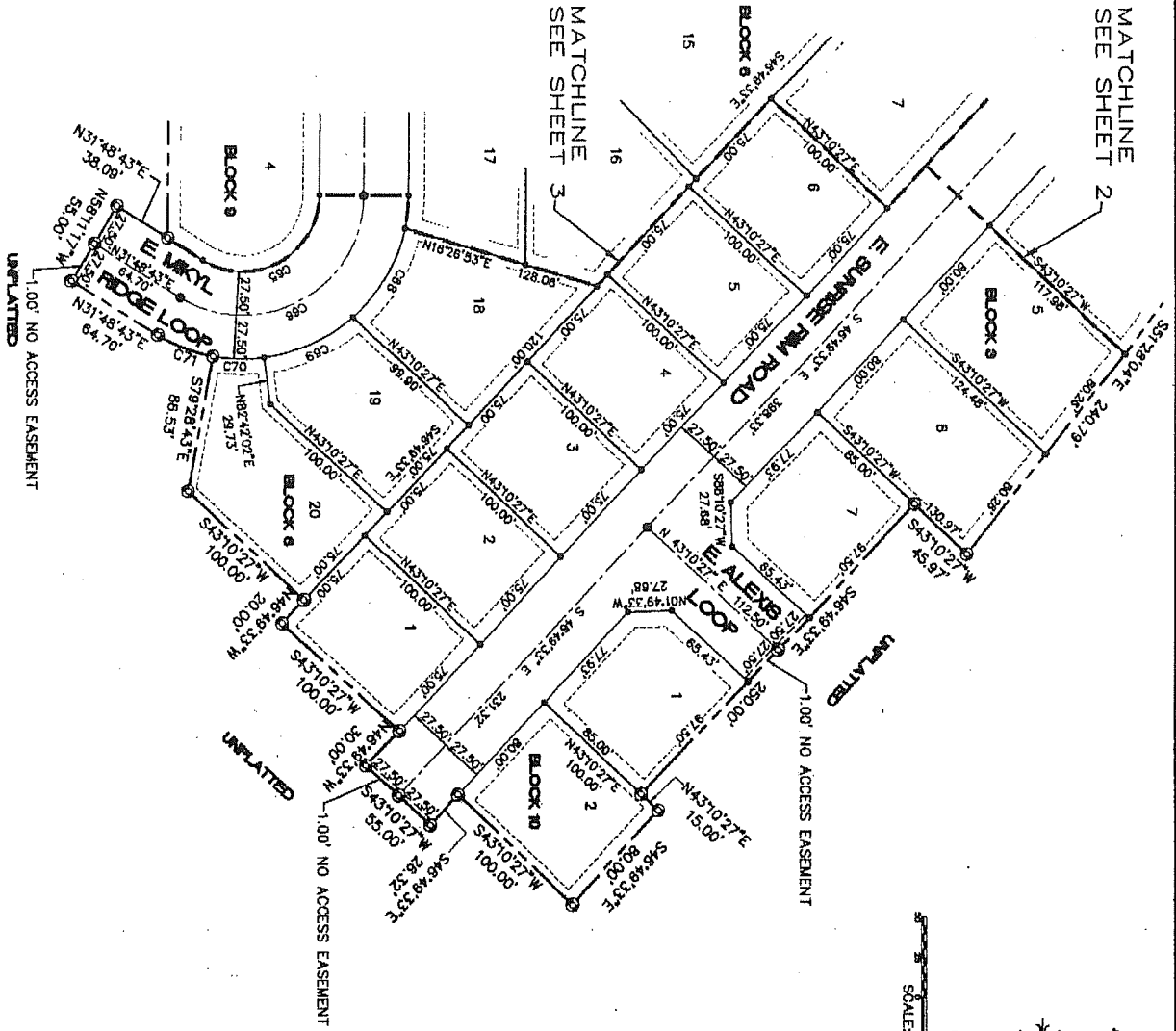
LINE	BEARING	LENGTH
L16	N00°19'27"E	118.11
L17	N89°40'33"W	12.00
L18	S88°40'33"E	12.00
L19	N00°19'27"E	100.89



224-03-3-3-0-00-00
 INDEX# 224-03-3-4-0-00-00
 4886 OVERLAND ROAD SUITE 162 BOISE ID 83705
 208-342-7957 - FAX 208-342-7457
FOX LAND SURVEYS, INC.
 PREPARED BY
 ASAD DINA PATE 3300P
 SHEET 3 OF 6

MATCHLINE
SEE SHEET 2

MATCHLINE
SEE SHEET 3



SCALE: 1" = 50'

FINAL PLAT
VISTA RIDGE SUBDIVISION PHASE 1

A PORTION OF THE SW/4 OF SECTION 3,
TOWNSHIP 2 NORTH, RANGE 2 WEST, BOISE MERIDIAN,
NAMPA, CANYON COUNTY, IDAHO
2004
FOX LAND SURVEYS, INC.

LEGEND

- BOUNDARY LINE
- LOT LINE
- ADJACENT PROPERTY LINE
- EASEMENT
- EASEMENT AND EASEMENT
- EASEMENT (SEE NOTES 2, 3, 4 AND 5 (SHEET 1))
- CENTER LINE
- SET 5/8" BEAK W/ CAP STAMPED "TSL PLS TRIP"
- SET 1/2" BEAK W/ CAP STAMPED "TSL PLS TRIP" (SHEET 1)
- SET 1/2" BEAK W/ CAP STAMPED "TSL PLS TRIP" (SHEET 1)
- SET 1/4" BEAK W/ CAP STAMPED "TSL PLS TRIP" (SHEET 1)
- FOUND 5/8" BEAK W/ NO CAP, UNLESS OTHERWISE NOTED
- FOUND 1/2" BEAK W/ NO CAP, UNLESS OTHERWISE NOTED
- ▲ CALCULATION POINT, NOTHING SET
- RM REFERENCE MARK
- WC WITNESS CORNER, PROPERTY
- CORNER MONUMENT SET 1" DIA. GALV. PIPE
- LINE, CAP OR A BLOCK, LINE BEAK
- NOT REFERENCED, A COMMON
- MONUMENT, UNLESS
- NOTED OTHERWISE

CURVE TABLE

CURVE #	RADIUS	DELTA	LENGTH	TANGENT	CHORD	BEARING	CHORD LENGTH
C94	71.00	123.217°	108.73	144.89	108.73	123.217°	108.73
C95	71.00	123.217°	108.73	144.89	108.73	123.217°	108.73
C96	102.00	98.810°	65.15	55.72	65.15	98.810°	65.15
C97	102.00	98.810°	65.15	55.72	65.15	98.810°	65.15
C98	102.00	178.915°	31.26	10.07	31.26	178.915°	31.26
C99	102.00	178.915°	31.26	10.07	31.26	178.915°	31.26
C100	102.00	178.915°	31.26	10.07	31.26	178.915°	31.26

